

Landscape scale delivery and vision in a fragmented landscape



Lancashire,
Manchester &
N Merseyside



Copyright Flight Images LLP www.flightimages.com (01276 856222)

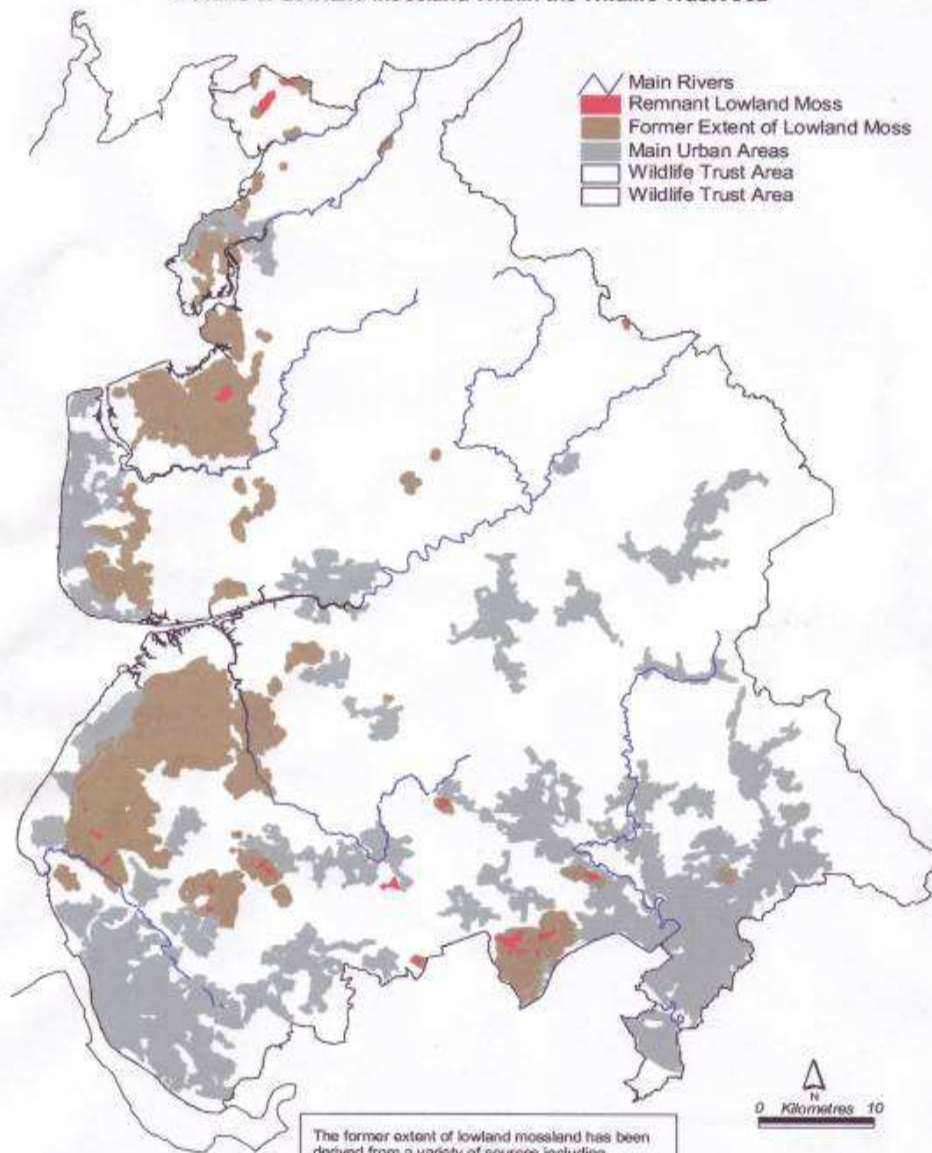
Mossland Project



Lancashire,
Manchester &
N Merseyside



Decline of Lowland Mossland Within the Wildlife Trust Area



The former extent of lowland mossland has been derived from a variety of sources including geological drift maps of various dates. In present day Lancashire an attempt was made to determine the pre-1600 mossland boundary as part of the Historic Landscape Characterisation Programme.





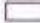

Source:

Lancashire County Council

- Trust Area – 97% destroyed (27,311 ha)
- 1.5 - Peat Extraction
- 1.5 % - intact habitat
 - ~ 40% managed

Decline of Lowland Mossland Within the Wildlife Trust Area



-  Main Rivers
-  Remnant Lowland Moss
-  Former Extent of Lowland Moss
-  Main Urban Areas
-  Wildlife Trust Area
-  Wildlife Trust Area

The former extent of lowland mossland has been derived from a variety of sources including geological drift maps of various dates. In present day Lancashire an attempt was made to determine the pre-1600 mossland boundary as part of the Historic Landscape Characterisation Programme.

Source:

Lancashire County Council.



Lancashire,
Manchester &
N Merseyside

Mossland Project Approach



Lancashire,
Manchester &
N Merseyside

- **Buy**
- **Restore**
- **Maintain**
- **Campaign**

Project Funding



Lancashire,
Manchester &
N Merseyside

- 2 ³/₄ Year Project ~ £1.4 million
- Wetland Vision - £813,693
- Match Funding £678,512 (incl £70,642 in kind)
- Post WV Secured - £417,286
- Currently Seeking £1.2 million

Funders



Lancashire,
Manchester &
N Merseyside



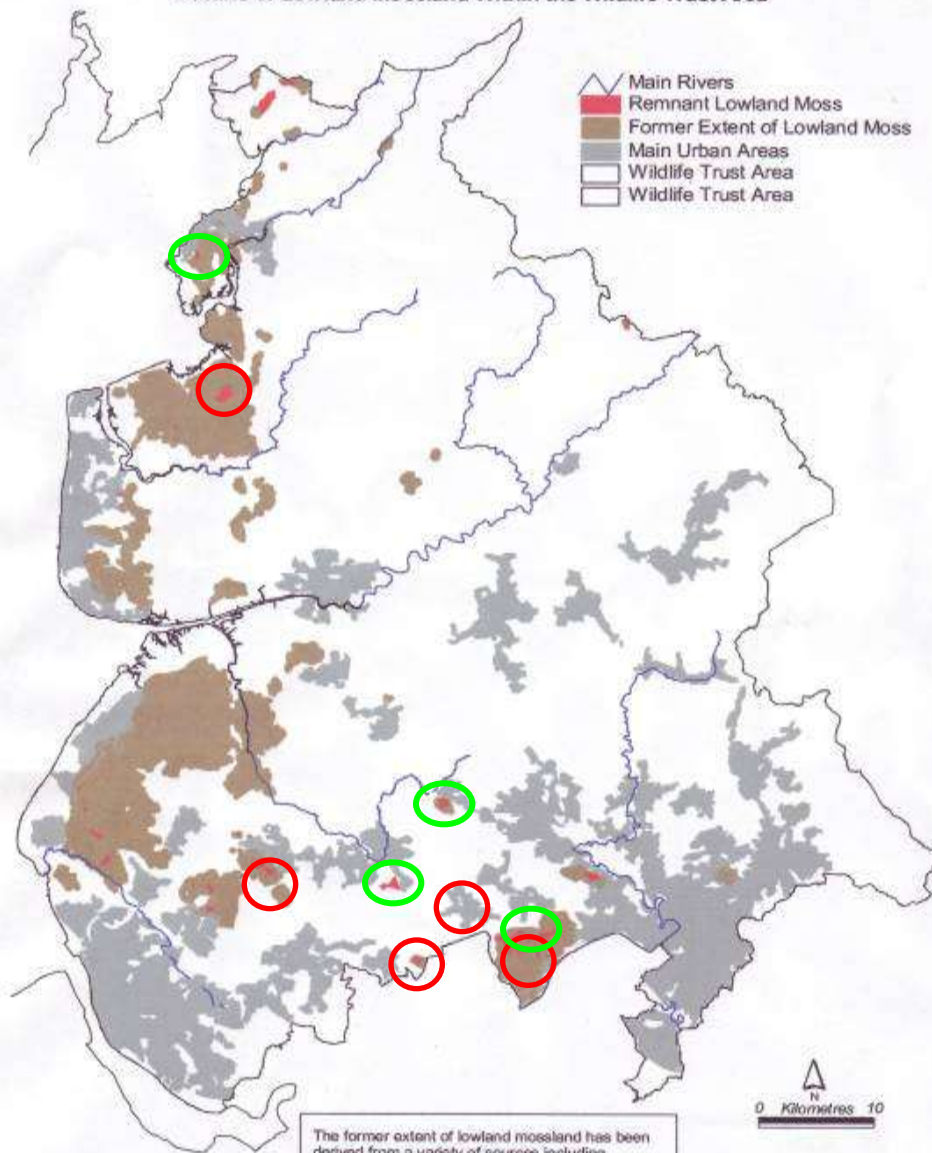
Supported through Defra's
Aggregates Levu Sustainability Fund



Building Communities. Transforming Lives.



Decline of Lowland Mossland Within the Wildlife Trust Area



The former extent of lowland mossland has been derived from a variety of sources including geological drift maps of various dates. In present day Lancashire an attempt was made to determine the pre-1600 mossland boundary as part of the Historic Landscape Characterisation Programme.

Source:

Lancashire County Council

- 6 Sites Purchased – 77 ha
 - Cockerham Moss (25 ha)
 - Cadishead Moss (8 ha)
 - Abram Flash (8 ha)
 - Lightshaw Meadows (13 ha)
 - Holiday Moss (3 ha)
 - Highfield Moss (20 ha)

Chat Moss



Lancashire,
Manchester &



Bedford Moss
SSSI

Astley
Moss SSSI

Astley Moss East

Little Woolden Moss

12 Yards Rd (Chat
Moss)

Cadishead Moss

Restoration Work



Lancashire,
Manchester &
N Merseyside



Restoration Works	Area/Amount
Bunding	3.8 km
Re-levelling	3.5 ha
Ditch Blocks	222
Scrapes and Ponds	12
Scrub Clearance	27 ha
Fencing	2.45 km
Footpath/Access	1.16 km





Matthew Roberts

Challenges



Lancashire,
Manchester &
N Merseyside

- Drainage
 - Dense Scrub
 - Massive Drainage Ditches
- Neglect
- Fire
- Lack of Planning/SSSI Enforcement
-



Lancashire,
Manchester &
N Merseyside



- Cockerham Moss
- Part of Winmarleigh Moss SSSI
- 4m Deep Drainage ditch
- Adjacent Grazing Pasture













Volunteers & Surveying



Lancashire,
Manchester &
N Merseyside

Volunteer Hours	6770
Volunteer Days	1181
Placements (volunteer or paid)	20
Training days (attended by 196 people)	15



Surveys since start of project	78
Dipwells Installed	69

Campaign



Lancashire,
Manchester &
N Merseyside

THIS IS OUR RAINFOREST



Lancashire
Manchester
North Merseyside

3 metres lost

**10,000 years undone
...for garden compost**

4 metres left

The peat extractors have just submitted planning application to dig a further 2 metres.

We need your support to make sure this doesn't happen...

**ACT TODAY BEFORE WE
LOSE MOSSLANDS FOREVER!**

Chat Moss, Irlam, Greater Manchester

in us: www.lancswt.org.uk

Protecting Wildlife for the Future

Campaign



Lancashire,
Manchester &
N Merseyside

People Engaged with	3288
Website Hits - Chat Moss Campaign	3733
Landowners engaged with	24
Organisations linked to or involved in the project	63
Press Releases	15
Radio Interviews	7
Magazine Articles reaching over 18,000 people	11
Talks presented	12
Conferences attended	10
Workshops attended	2
Facebook friends	184

Future



Lancashire,
Manchester &
N Merseyside

- Purchase 60 ha habitat
- Purchase and Restore 100 ha Peat Extraction Site
- Campaign against Peat Extraction



Copyright Flight Images LLP www.flightimages.com (01276 856222)

Thank you For Your Attention

