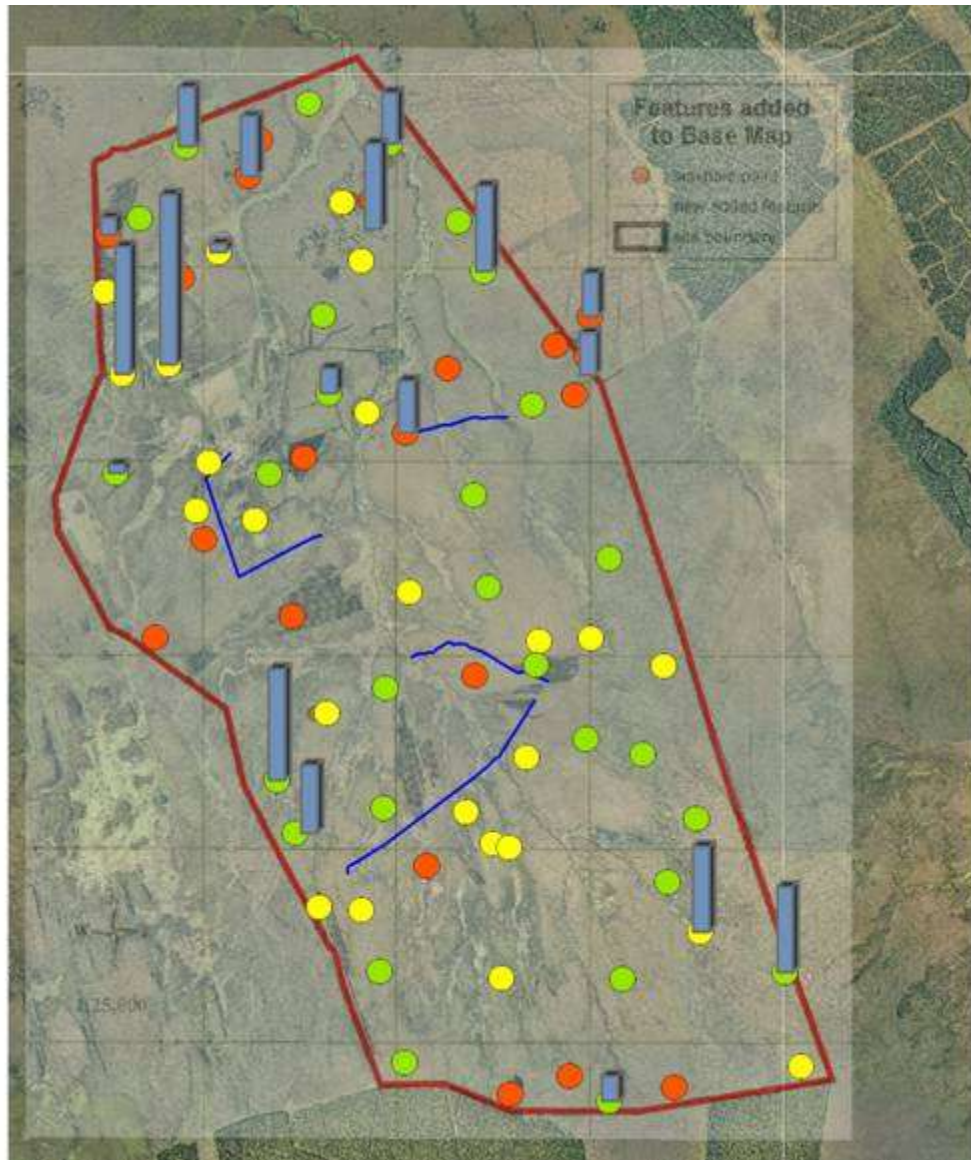




Copyright: John Ganon, Specnet



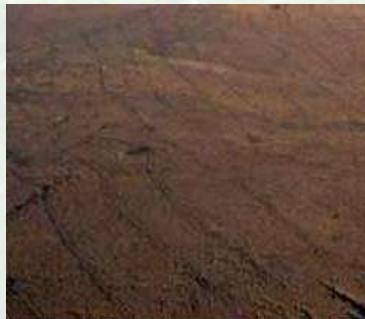
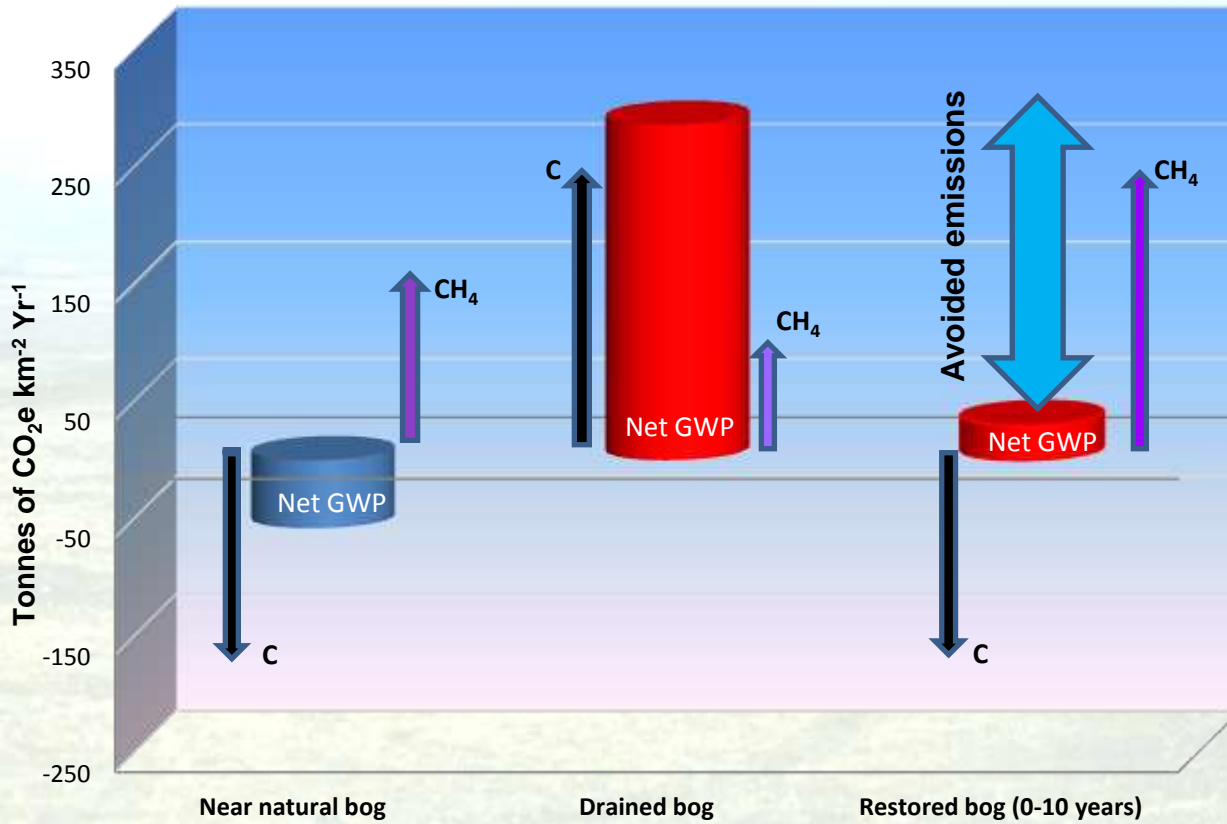








Global Warming Potential of Peat Bogs





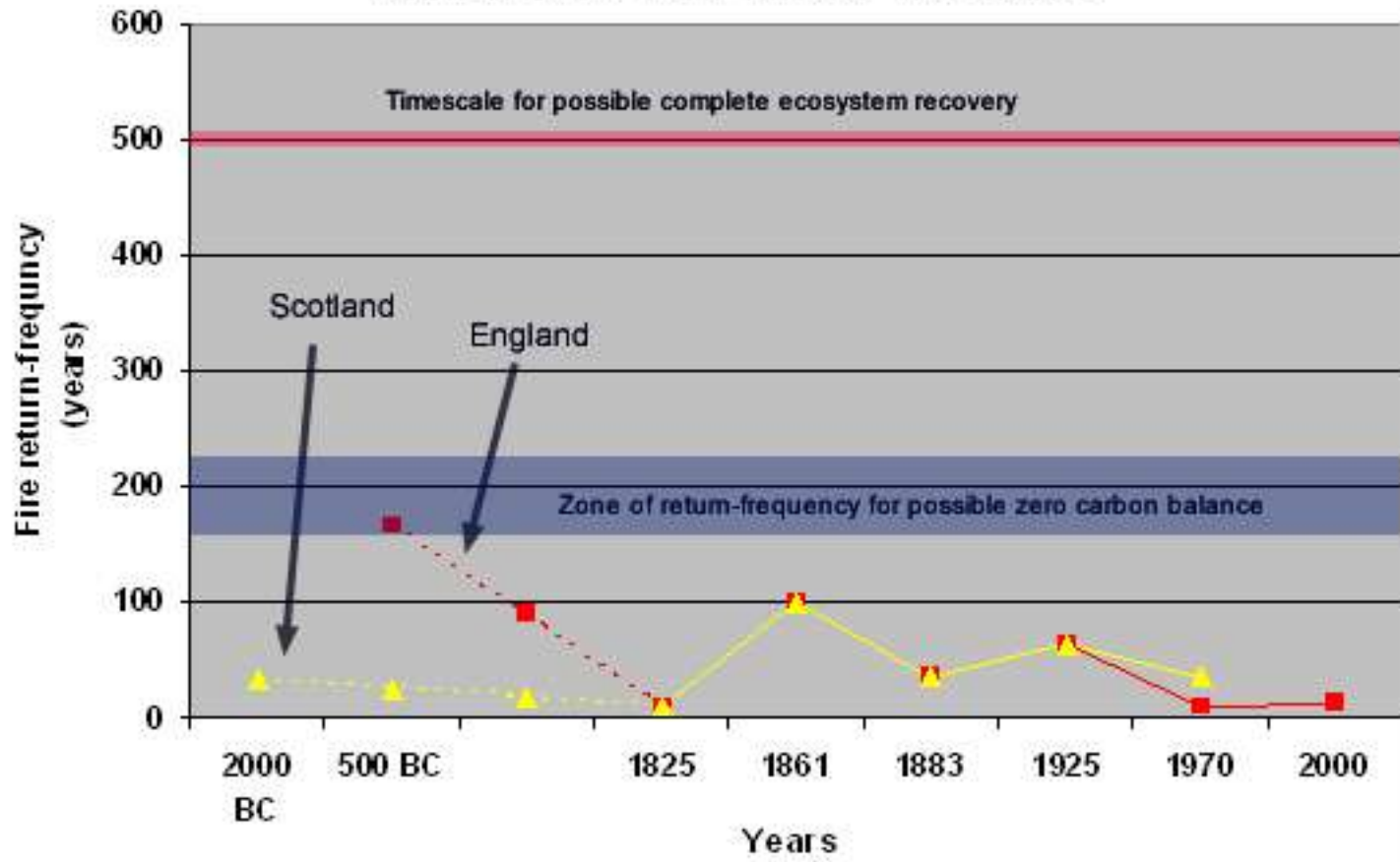








Some fire return-times from British blanket bogs with possible 'zero-carbon' thresholds







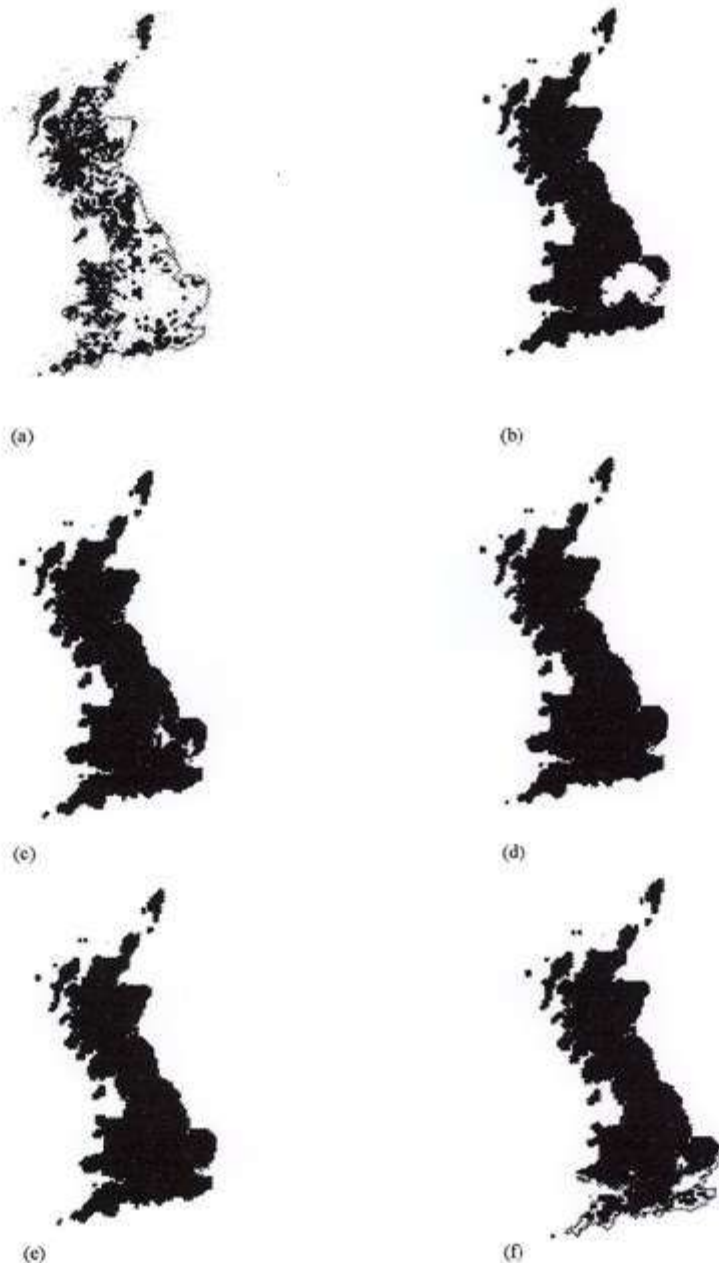


Figure 3.6 SPECIESv1 model results for *Sphagnum papillosum*: (a) observed distribution; (b) current climate (1961-1990); (c) 2020s Low scenario; (d) 2020s High scenario; (e) 2050s Low scenario; (f) 2050s High scenario











Great Fen

Newsletter 10 Autumn/Winter 2010

news

An area of beauty and wonder the size of a city!

This is the vision set out in the Great Fen Masterplan, published this spring. It describes a vibrant Living Landscape, full of natural beauty, where birds, plants and animals flourish in safety, and where people can relax, have fun, learn, and make a living.

The Great Fen's five project partners have compiled the Masterplan to bring this ambitious vision to reality.

Over 99% of the natural Fen wetland has been lost. Two of the last precious fragments, Woodwalton Fen and Holme Fen, lie at the heart of the Great Fen area. The rare plants and animals they support, and the habitats they depend on, had to be protected and enlarged, before they too were lost forever.

Nature conservation is not the only priority. Problems such as the protection of homes and businesses from flooding and the loss of peat soils need solving. The Great Fen will also benefit people: residents and visitors, at work or at play. Many local people contributed to the Masterplan through a wide consultation exercise.

The Masterplan describes new habitat areas (open water, reed bed, Fen

meadow, drier pasture, and woodland pasture) and how they will be created and managed.

It shows how the Great Fen can play a vital role in climate change adaptation and mitigation. Re-wetted areas will trap carbon dioxide and other greenhouse gases in the peat. New habitat areas will provide sanctuary for plants and animals threatened by changing climates.

The Masterplan also looks at what will be needed to help people enjoy the Great Fen: routes for walkers, cyclists and horses, footpaths, transport links and information points, inspiring places to play, learn, relax and watch wildlife.

It sets out opportunities for new businesses like cycle hire and bed and breakfast, and opportunities in farming, such as meat production from animals grazing new pastureland. Harvesting

Great Fen reed could support traditional Fenland industries such as thatching.

Creating the Great Fen depends on many complex factors such as the availability of land to bring into management control, availability of water resources, funding and the support of local people.

The Great Fen is, and will be, nationally and internationally important, and an inspiring new resource for people and nature. The Masterplan will help turn passion into reality.

Kate Carver
Project Manager

See the Masterplan Summary Report at www.greatfen.org.uk



The Great Fen project is a partnership between the following organisations:



