



British Ecological Society

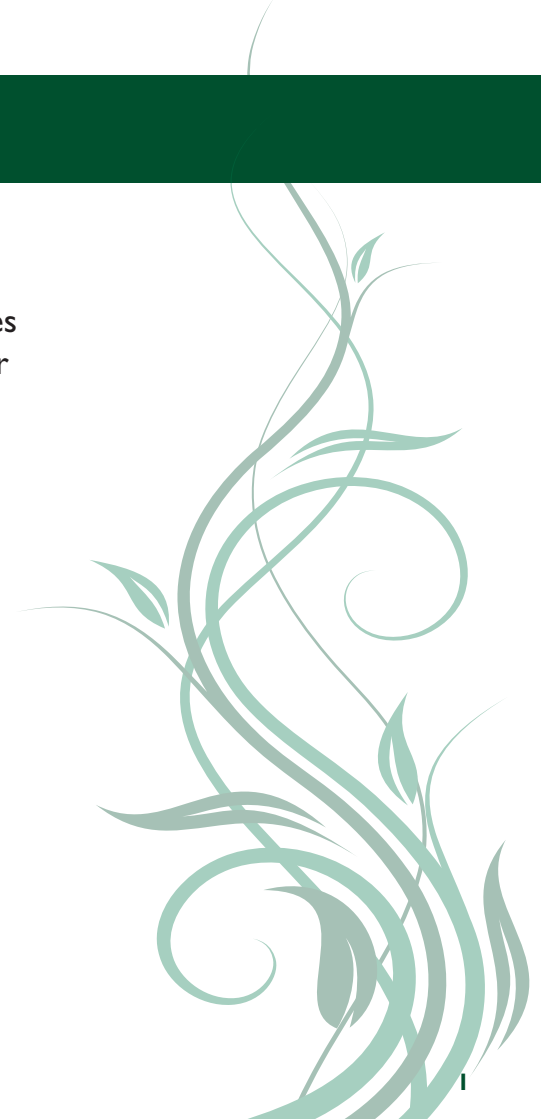
Annual Report 2010

Annual Report 2010

Advancing Ecology and Making it Count

The Society's vision of *advancing ecology and making it count* continues to provide a framework for our activities. To help us achieve this our objectives are:

- Developing ecological science and scientists
- Improving the quality of education and capacity building
- Promoting the use of ecological science
- Building collaborative partnerships
- Ensuring financial sustainability
- Improving efficacy



Contents

Highlights	3
From the President	6
From the Executive Director	9
Education	10
Grants & Awards	12
Meetings	14
Membership	16
Policy	17
Publications	19
Special Interest Groups	30
Summary of Financial Information	39
People	40

British Ecological Society

Charles Darwin House, 12 Roger Street, London WC1N 2JU

Tel: +44 (0)20 7685 2500 Fax: +44 (0)20 7685 2501

info@BritishEcologicalSociety.org www.BritishEcologicalSociety.org



Highlights

Over the next three pages are a few of the highlights from an exciting 12 months in the British Ecological Society (BES). Read on to find out more about how the BES has helped to advance ecology and support the ecological community.



August 2009

The Society had a big presence at the INTECOL Congress in Brisbane, Australia, promoting the BES hosted INTECOL Congress, 18 – 23 August 2013 in London, UK, and highlighting the Society's activities to an international audience.



September 2009

The BES Annual Meeting at Hatfield was a great success, showcasing cutting edge ecological research. We were also busy recruiting younger members.



Journal of Ecology published a tribute to John Harper.



The BES organised a range of events at the British Science Festival including a Climate Change Walk at the Royal Horticultural Society's garden at Wisley.

October 2009

The BES Public and Policy Committee met in Scotland, with reception at 'Our Dynamic Earth', attended by Roseanna Cunningham, Environment Minister, followed by dinner with Prof. Anne Glover (Chief Scientific Advisor) and Prof. Maggie Gill (Head of RERAD).



This month we also launched a joint position statement on 'Halting UK Biodiversity Loss' with the Institute for Ecology and Environmental Management in Westminster.

Highlights



November 2009

The BES was successful in ensuring field experience and fieldwork techniques became a national requirement for GCSE science and biology students (14-16year olds).



December 2009

The Society moved into its new home at Charles Darwin House along with the Society for Experimental Biology and the Biochemical Society.



January 2010

The *Journal of Animal Ecology's* first 'How to' features animal models. It has proved very popular, attracting 3 times the normal number of downloads.



February 2010

In the first issue of 2010 *Functional Ecology* published a special feature on Adaptive Foragers and Community Ecology guest edited by Andrew Beckerman, Owen Petchey and Peter Morin (Vol.24, issue 1). This special feature was accompanied by a virtual issue on Food Webs.



March 2010

The newest addition to the Society's leading ecological journals, *Methods in Ecology and Evolution*, published its first issue.



The BES Mentoring Scheme for Women in Ecology moves into its second year, helping women to establish a successful career in ecology.

Highlights



April 2010

World class research is discussed at the BES Annual Symposium 'The Integrative Role of Plant Secondary Metabolites in Ecological Systems', in Sussex, UK, thanks to organisers Sue Hartley, Glenn Iason and Marcel Dicke.



We ran the second successful Science – Policy Interactions Training Workshop with the NERC at the Defra Innovation Centre, Reading.



June 2010

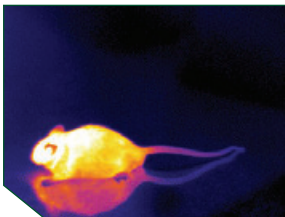
Professor Sir John Beddington, Government Chief Scientific Advisor and BES Honorary Member, officially opens Charles Darwin House.



A paper by O'Donnell, Webb & Shine in *Journal of Applied Ecology* attracted a huge amount of media interest globally with coverage on radio, tv, in the scientific and popular press. The story of the endangered northern quoll under threat from invasive cane toads in Australia showed how taste aversion can be used to educate captive-reared quolls to avoid attacking the toxic toads.



The first in 'Towards No Net Loss' workshop series, exploring biodiversity offsetting was held at CDH. It was organised by the Natural Capital Initiative which the BES is a founding partner of.



May 2010

In their *Journal of Animal Ecology* review, Speakman and Król suggest that capacity to dissipate heat is a major constraint on endotherm maximal metabolic rates and hence their ecology.



July 2010

A virtual issue across BES Journals on biodiversity marks the International Year of Biodiversity.

From the President

Charles Godfray

It is a pleasure to begin by thanking my predecessor, Professor Malcolm Press, for all his hard work over the last two years, and personally for his great assistance as I have learned the ropes of being BES President. Much of what I will discuss below is Malcolm's legacy and his Presidency has made a major mark on the Society.

The major event for the Society this year was the successful purchase, renovation and occupation of Charles Darwin House, our new headquarters in Rogers Street off the Grays Inn Road. We bought the building jointly with the Biochemical Society and the Society of Experimental Biology, pioneering last year novel coalitions before they suddenly became fashionable. The three societies occupy the top two floors of the building while the ground floor contains lecture and meeting space, and is already proving very popular with BES members. Having a home base which can accommodate the Society's office, Council and other meetings, as well as small to middle sized meetings, will make a huge difference to the cohesion and esprit of the BES, allowing it to run more efficiently and better to serve the needs of its membership. The partnership with the two other societies will allow us to rationalise some back office functions, and to share best practice across the three organisations. Two further floors of Charles Darwin House were not renovated when we moved in, but the three current

occupants have taken the decision to go ahead and do this work now so that the space can be occupied and revenue earning next year. There has already been considerable interest in renting this space, and by the time I report next year I suspect the building will be fully occupied. We held two events to launch Charles Darwin House, one for BES staff, committee members and guests, and one for all three societies where the Government Chief Scientific Advisor (and honorary BES member), Professor Sir John Beddington, named the building in the presence of representatives from the Darwin family. Many BES members have now visited our headquarters, and I strongly encourage those that have not to call by if you are in London, or better still consider holding a meeting there.

For a move of this magnitude to occur so seamlessly requires an enormous amount of work, and indeed courage. The Society owes Malcolm Press a great debt of gratitude for skilfully piloting the project during his Presidency while without the Stakhanovite labours of our Executive Director, Hazel Norman, the Society would likely still be in packing boxes somewhere between Putney and Camden. I would like also to thank the BES staff for so cheerfully putting up with the inevitable disruption and extra work of the move.



Charles Godfray

From the President

The first BES meeting in Charles Darwin House was to celebrate the launch of our new and innovative journal, *Methods in Ecology and Evolution* (MEE). MEE differs in a number of ways from other journals in our stable. It is devoted to methodological issues, but defined in the very broadest way – everything from new statistical techniques to pieces of hardware. It puts great emphasis on facilitating the uptake of these new techniques, and strongly encourages all types of online enhancements to papers - audio clips, video, flash video as well as computer code and tutorial materials. The journal blogs and twitters, is present on Facebook & YouTube, and provides RSS and e-alerts: try out the journal podcast on <http://www.methodsinecologyandevolution.org/view/0/podcasts.html>. Already MEE is attracting substantial numbers of papers, and major interest online. Professor Rob Freckleton, ably assisted by Graziella Iossa, are to be congratulated on such a successful launch.

Planning is continuing apace for the Society's centenary in 2013. The showpiece of the anniversary year will be the INTECOL Congress in London in August. Professor Alastair Fitter is chairing the INTECOL working group and the BES has contracted Congrex UK Ltd to help organise the meeting. In the lead up to the INTECOL Congress the Society is planning a series of events under the working title of the

Festival of Ecology which will take place all round the country and include activities targeted at schools. The Society has put aside resources to support these events and in the next year we will be employing someone to work full time on centenary events. We very much hope that as many members of Society as possible become involved in the celebration.

The need to reduce the UK's structural deficit over the next five years will see a major retrenchment in public spending that will have significant direct and indirect effects on the BES. So far the Society has not been severely affected: though our investment income has declined because of the recession we fortuitously purchased Charles Darwin House at a low point in property prices (and sold our old home, Blades Court, after prices had recovered somewhat). Income from journals remains steady, at least for the moment. But it would be foolish to take anything other than a very cautious approach to the Society's finance looking forward in the medium term, and that will certainly be Council's policy over the next year. It seems highly likely that the volume of science funded in the UK will decrease over the next five years. This will impact BES membership which has been declining over the last decade, something that Council is trying to understand and reverse. It will become critical for us to explain to a wide audience the importance of ecology, both the need to develop the

From the President

fundamental science, and the great value of applying ecology to help address the major environmental issues facing humanity. It will be more than ever important to enthuse people, especially young people, about ecology.

Finally, I would like to thank all those who are all retiring from Council. This year and next will see a major turnover in Society officers and committee chairs, the people who keep the BES running. I'm very grateful to Sue Hartley (who brought an ecological theme to last year's Royal Institution Christmas lectures) who is handing on the baton of Publication Committee Chair to Alan Gray, Calvin Dytham who is being replaced as Treasurer by Drew Purves, Hefin Jones at Meetings who will be followed by Andrew Beckerman, Dan Osborn and Peter Carey who have boxed and coxed chairing the Public & Policy Committee which will now be led by Juliet Vickery, Kate Lessells who steps down as Vice President and Greg Masters who steps down as Honorary Secretary. I am also grateful to Margaret Palmer and David Hodgson who come to the end of their terms as Ordinary Members of Council although David will be staying on to take up the role of Honorary Secretary. I'm pleased to announce that Council will be nominating Georgina Mace to be the next President. If approved at the next Annual Meeting we shall celebrate our 100th birthday with our first woman president – about time!

From the Executive Director

Hazel Norman

The last 12 months have been exciting and challenging for the Society. As Charles has mentioned, we have moved to a great new home and launched a new journal. Charles Darwin House provides great working space for staff as well as state of the art meeting space for business and scientific meetings. It was refurbished to a high sustainability standard, achieving an Excellent BREEAM rating, the second highest award and no mean feat for a 1959 office block. The new *Methods in Ecology and Evolution* journal has got off to a flying start due to the hard work of all involved and it is an exciting addition to the Society's stable of excellent Journals. Please look at the Publications section of this Report to find out more about the innovative work of our publications team.

There has also been outstanding work across many areas of activity during the last year. Policy has been very active with the launch of a joint statement on biodiversity with the Institute of Ecology and Environmental Management, a Parliamentary Reception, many responses to consultations and further work to help ecologists engage with policy makers. The review of the GCSE curriculum provided an excellent opportunity for the BES to influence the education of 14-16 year olds in England and Wales and we were particularly successful in increasing the profile of fieldwork. There are likely

to be further opportunities for influence in the next year and we are very well placed to make the most of them.

Another major change made this year was the decision to move the Annual Meeting back to its traditional December slot and that will happen in 2012. The Annual Symposium 'The Integrative Role of Plant Secondary Metabolites in Ecological Systems' was very successful with an outstanding range of leading ecologists giving talks. The BES continued to make a major contribution to the support of the ecological community through its grants and awards last year with £205,000 awarded to 136 projects across the world.

Please do look at the rest of this Report which gives a summary of the exciting and important work the BES does for the ecological community. To carry on this work the BES needs the support of ecologists from around the world so please do encourage your colleagues to get involved by becoming a member.

The Society's amazing work is made possible by the hard work and dedication of many volunteers and staff. I would like to thank them all for making the BES a vibrant and thriving organisation.



Hazel Norman

Education

From Libby John, Education, Training and Careers Committee Chair, and Karen Devine, Education Officer

INFLUENCING EDUCATION POLICY

The Education, Training and Careers Committee is increasingly engaging with a number of organisations seeking to influence education policy at all levels

Development of GCSE Science

- The GCSE Science criteria for teaching from September 2011 onwards were published in November 2009 and the ETCC was pleased to note that a number of our recommendations had been carried through to the final criteria statements. These criteria set out the minimum requirements for all students undertaking GCSE science in England, Wales and Northern Ireland. The accepted recommendations included explicit mention of field experience for all students and fieldwork techniques for those students opting to take additional science or biology.
- We followed up this work by contacting the awarding bodies charged with developing the specifications that teachers will use as the basis of their teaching. We have focused on the ecological content of the specifications and worked with the various awarding bodies.



Libby John



Karen Devine

Education Policy Lunchbox

- The ETCC has been at the forefront of education policy development in 2010 and in partnership with the Biochemical Society and Society of Experimental Biology education staff hosts a monthly education policy lunchbox which aims to share information, good practice and provide opportunities for networking across the many bioscience Learned Societies.

Outdoor Science Working Group

- In collaboration with the ASE (Association for Science Education) and Justin Dillon from Kings College London, the ETCC and SAPS (Science and Plants for schools) convened a very successful seminar on the assessment of outdoor learning; this was one of five meetings considering all aspects of outdoor learning including teacher training, informal learning, CPD, assessment and policy.

Education

SCHOOLS EDUCATION

Working with teachers is becoming increasingly difficult with schools budgets limiting the amount of time teachers may have away from the classroom or on developing and delivering more expensive practical activities. The ETCC is changing how it supports school education.

Outreach

- The ETCC was successful in bringing together a strong partnership of regional Science Learning Centres offering £200 per teacher as funding support, the Peak District National Park Authority, education equipment suppliers, offering free training and loan of equipment and HE staff to further develop our annual outreach programme working with teachers and their students in the Peak District.

Teaching and Learning resources

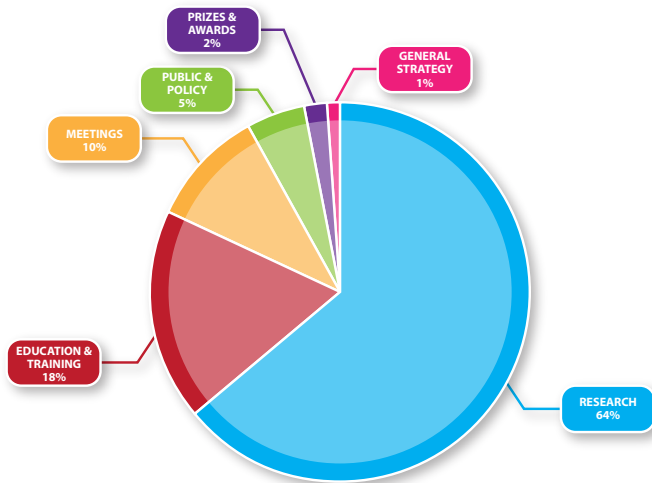
- The ETCC followed up our very popular wall chart, Developing School Grounds for Science: PONDS, with the next wall chart focusing on hedges; we are working with Hedgelink in particular. The wall chart will be sent free to all secondary schools in the first week of September and aims to inspire teachers to use their local area to engage students with ecological science.



Grants & Awards

From **Mike Begon, Vice President and Grants Committee Chair, and Dominic Burton, Grants Officer**

In 2009 the BES committed close to £205,000 to 136 projects across its grants and awards portfolio. The split between some of the strategic aims of the society can be seen in the diagram below.



Below are some of the activities that received BES funding in 2009:



Mike Begon



Dominic Burton

- £38,000 was awarded to 6 Overseas Bursary recipients to carry out projects in South Africa, Ethiopia, Cameroon and Kenya.
- £47,555 was awarded to 25 Small Ecological Project Grants being carried out in Argentina, Australia, Belize, Brazil, Canada, England, Iceland, Mexico, Namibia, Scotland, South Africa, Spain, Tanzania, and Wales.
- £19,087 was awarded to Ms Julie Razafimanahaka for her Overseas Fellowship entitled “Harvest of *Hipposideros commersoni* (Chiroptera: Hipposideridae) in Madagascar: a sustainable use of bat bushmeat?”
- £13,000 was awarded to Dr Daren Evans for his Early Career Project Grant entitled “Does habitat modification alter the structure of avian food webs? An experimental approach”, and £12,000 was awarded to Dr Trenton Garners for his Early Career Project entitled “What effect does conversion to oil palm have on amphibian biodiversity and parasitism in Malaysia?”

Grants & Awards

- £5,000 POST Fellowship funding was awarded to Dr Rebecca Ross which resulted in a Parliamentary Office for Science and Technology postnote being produced in January 2010 entitled “Insect Pollination”.
- £2,500 was awarded to Professor Alastair Fitter for the maintenance and extension of the Ecological Flora of The British Isles database (Ecoflora) - www.ecoflora.co.uk The Ecological Flora of the British Isles Database and Web site currently contains a total of 239,000 records.

The creation of an online donation facility for the BES website as well as the move towards online grants assessment was agreed by the BES Grants Committee. The Grants Committee also agreed to a move to move to a two stage grant assessment process for the Early Career Project Grants to reduce the amount of work required from applicants and assessors.



Meetings

From Hefin Jones, Meetings Committee Chair, and Richard English, Communications Officer

Annual Meeting: The 2009 Annual Meeting at the University of Hertfordshire, Hatfield, although smaller in delegate number than previous years, proved to be a successful meeting attracting 511 delegates from the UK, Europe and overseas. Over 140 student delegates registered. There were 222 oral and 84 poster presentation abstract submissions. The Tansley Lecture, entitled *Using Transformed Native Plants to Study Ecological Interactions* was given by Professor Ian Baldwin of the Max Planck Institute for Chemical Ecology in Jena, Germany. The 2009 BES Lecture was given by Professor Paul Collier on his book 'The Bottom Billion' which discussed how to increase opportunities for the poorest billion people in society. The seven Thematic Topic Sessions were well-attended and the six invited 40-minute talks, interspersed among the Ordinary Sessions, proved popular. A number of events were organized including an evening of entertainment with the band Warblefly; and ecological speed dating, a specially commissioned play to celebrate the Darwin bicentenary, and an ecologically-themed pub quiz. As always, the BES acknowledges the considerable input and enthusiasm of the Local Organiser, Dr Ronni Edmonds-Brown (who we believe is the only Local Organiser to have run two Annual Meetings!).



Hefin Jones



Richard English



Heather Newton

Annual Symposium: The University of Sussex was the location for the 51st Annual Symposium on The Integrative Role of Plant Secondary Metabolites in Ecological Systems. Although a relatively narrow specialisation this was another very popular and successful meeting, drawing together a diverse array of 86 international delegates. As well as invited speakers there were also a number of offered shorter presentations, along with poster displays. The Organisers, Professor Sue Hartley, Dr Glen Iason and Professor Marcel Dicke are to be congratulated, and thanked, for putting together such an interesting programme of talks.

Meetings

Specialist Groups: Most of the Society's Specialist Groups (SGs) had another active year and continued to develop a number of activities. Meetings Committee and many of the activities of the Society would not happen and certainly not flourish without the considerable input of colleagues in the Specialist Groups. 2010 sees the triennial review of the BES's SGs; this self-critical review of activities ensures their continued development and success.

INTECOL 2013: The planning and organisation of INTECOL 2013 progresses with gusto! Both Scientific and Organisation Committees have been active in their discussions. A Conference Organiser has been appointed and the initial slates of Symposium and Thematic Topics are currently being produced. Discussions are also in hand regarding field visits, social events and the role of INTECOL 2013 within the BES Centenary Celebrations.

Strategy: During the past 12 months Meetings Committee has again been looking at ways to encourage (i) synergisms between SGs and encourage joint activities; (ii) develop field and satellite meetings to the Annual Meeting; (iii) develop joint meetings with other learned societies, and (iv) encourage ecologists from developing countries to attend BES meetings.

A Personal Note from the Chair: After nine years as Meetings Committee Chair and ten Annual Meetings this is my last Annual Report. I have very much appreciated the opportunity to serve the BES; it has been a great privilege. The work would not have been possible were it not for the dedication of all the BES Office Staff. I thank them all, and in particular for the support, friendship and 'comradeship' of Hazel Norman, Richard English and, more recently Heather Mewton. Without the loyalty and dedication of our BES Office Staff the 'job' would not have been possible. I wish my successor (to be elected at the AGM) the very best in taking on a task that I have so thoroughly enjoyed.

Membership

From Kate Lessells, Vice President and Membership Committee Chair, and Bill Bewes, Membership Officer

Total Membership currently stands at 3802, a slight increase on last year. So far we have had 520 new members, with 265 of those students. Over the course of the year we have been looking at ways to increase membership levels: the more members we have, the more the Society represents the voice of ecology in this country and the more influence we will have with policy makers. We are striving to ensure that we support our community at all stages of their career from those in training/education to senior positions.

The *Bulletin*, the voice of our membership, has its 40th anniversary this year and has been going from strength to strength. Alan Crowden our *Bulletin* editor has been busy developing new features and other content and it will undoubtedly continue to flourish. Please see the Publications section for more details on the development of the *Bulletin*.

Benefits of membership include:

- Reduced price registration for all BES run and sponsored meetings (BES Student members are entitled to further discounts)
- Member only ring-fenced grants
- The *Bulletin* - the newsletter which keeps you up to date with the ecological community
- Networking opportunities to meet and interact with other ecological professionals
- Low cost, world class journals
- Member only discounts from leading scientific publishers
- Monthly eBulletin giving members priority notice of BES initiatives and opening dates
- Supporting the BES's vision and activities



Kate Lessells



Bill Bewes

Help us have a stronger voice by encouraging your colleagues to join the Society.

Policy

From Peter Carey, Public and Policy Committee Chair, and Ceri Margerison, Policy Officer

It has been another busy year for the BES Policy Team. Jonathan Hall joined as Policy and Communications Assistant and left at Christmas to join the RSPB as Henderson Island Project Coordinator. Kirsty Wilmot joined as a part-time, temporary, Policy Assistant in May 2010.

Developing ecological science and scientists

Parliamentary shadowing scheme: Eight early career ecologists took part this year; two at Defra; one at the Welsh Assembly Government; one with the Scottish Government and four with MEPs, including Caroline Lucas—now the first Green Party MP. The expansion of the scheme into Brussels is an important development: the EU generates over 80% of UK environmental policy.

Science – Policy Interactions Training Workshop: Participants at the second annual BES – NERC workshop (May 2010) spent two days in interactive sessions learning how to present research to meet the needs of policy-makers. Participants rated the workshop as ‘excellent’ or ‘good’. Many said they gained a better understanding of science policy, were inspired, or enjoyed the networking opportunities.

Promoting the use of ecological Science

PPC meeting in Scotland: In October PPC met with Scottish Government officials, coinciding with a Knowledge Scotland Partnership conference at ‘Our Dynamic Earth’.

The Scottish Minister for the Environment joined us at an evening reception. Discussions over dinner allowed PPC to understand Scotland’s policy needs and brought us closer to those delivering these policies. PPC intend to hold a meeting in Peterborough or Cambridge in 2010 to discuss English issues and also those of the UK Overseas Territories.

Position statement with Institute of Ecology and Environmental Management (IEEM) and a parliamentary reception: October saw a joint BES- IEEM reception to launch a position statement on the importance of ecological science in determining and supporting policy. The audience heard presentations from speakers including Lord Selborne FRS and Pavan Sukhdev, leader of the TEEB study. We will continue to collaborate with the IEEM wherever feasible to raise the profile of ecology.



Peter Carey



Ceri Margerison

Policy

British Science Festival: We organised three events at the Festival: a panel discussion on “Gardening for Wildlife”; performances of ‘Re:Design’, about Charles Darwin, and a ‘Climate Change Walk’ through RHS Wisley. Our ‘Gardening for Wildlife’ event accounted for two thirds of all media coverage from the Festival on 7 September, thanks to our speakers, including Dr Nikki Gammans, Bumblebee Conservation Trust, and Dr Ken Thompson, University of Sheffield.

Building collaborative partnerships

Natural Capital Initiative: The BES continues to support the NCI as a founding partner. A Project Manager joined NCI in early 2010 and is scoping three strands: linking social and natural capital; ecosystem services and health; and ecosystem service valuation. The NCI ran the first in a workshop series exploring ‘biodiversity offsetting’ in the UK on 22 June. Further workshops will follow later this year.

Charles Darwin House: In collaboration with the Biochemical Society the BES has formed ‘Policy Lunchbox’, a network of policy professionals from the not-for-profit sector. The two societies will further develop this resource over the coming year. ‘Education Policy Lunchbox’ has been formed by the BES, Biochemical Society and Society for Experimental Biology due to the success of the original network.

Publications

From Sue Hartley, Publications Committee Chair and Lindsay Haddon, Publications Manager

- Total income to the Society from the four journals was £1.68m. Nearly half of the subscriptions to BES journals are included in multi-year deals, providing a potential buffer against the short-term effect of the economic downturn on 2010 and subsequent income.
- Nearly 1.2 million accesses were made to the full text of BES articles (including the archive held on JStor) in 2009. Readers will benefit from the enhanced features provided by the launch of the Wiley Online Library in July 2010.
- *Methods in Ecology and Evolution* has already become established as a valuable addition to the portfolio and its use by the community is indicated by extensive access to articles to novel features such as its Blog. We look forward to its early acceptance for indexing by ISI.
- The Publications Strategy Day held in May 2010 was well attended by journal and council representatives. External speakers and Wiley-Blackwell staff joined in discussions focused on issues facing Society publishers, exploiting the online environment and free availability of information.



Sue Hartley



Lindsay Haddon



Nickie Roake

- Two Virtual Issues, illustrating the BES journals' contribution to the development of ecological methods and to biodiversity, drew together papers from across the Society's portfolio. The enhanced homepages launched in early 2009 have become very popular, with 20000 visitors per month accessing podcasts and video presentations, in addition to more traditional journal information.
- We continue to record key performance indicators Journal meetings, which were held in association with the strategy day, will feed into updated development plans.

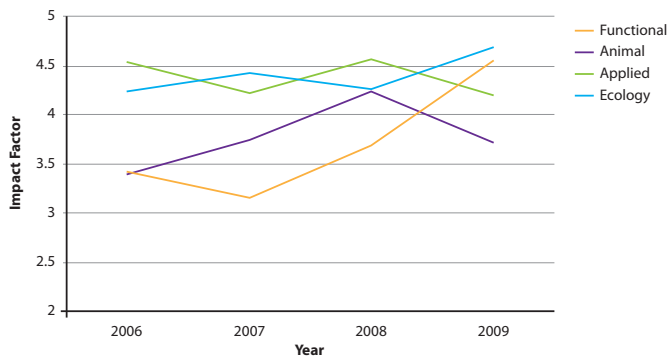
Publications

- The move to Charles Darwin House allows us to develop the publications team, with all staff now working regularly together in the office. Gerwyn Clegg left to pursue a career in teaching and, as a result of the restructuring requested by Council, Sue Cliffe decided to take redundancy after 6 years of excellent service to the Society. We wish Sue all the very best for the future. Nickie Underhill is now a permanent member of the CDH team, and, once the transition is complete, will be working across all four of the established journals.
- We have welcomed four new editors as detailed in the individual journal reports. Sue Hartley completes her term as Committee Chair and the society thanks her for her hard work. Alan Gray is the Council nominee to succeed Sue and we wish him well.

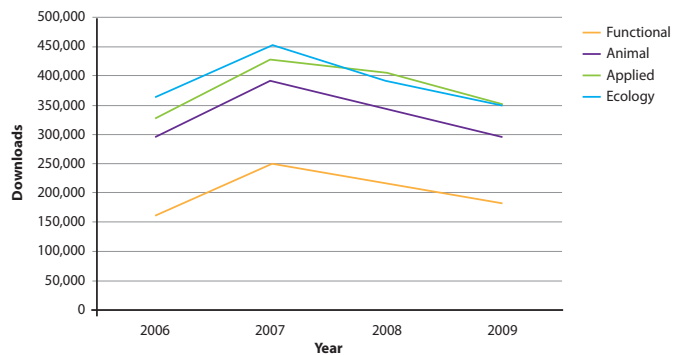


Publications

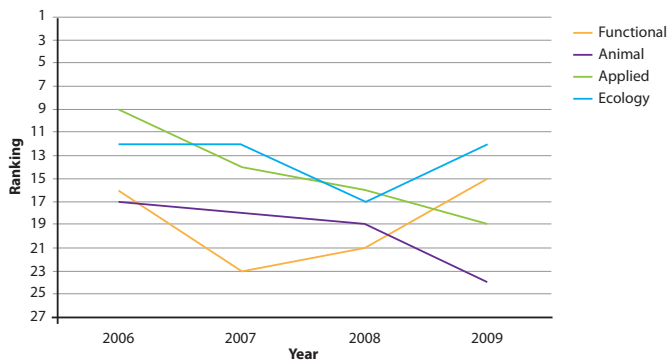
Trends in impact factors



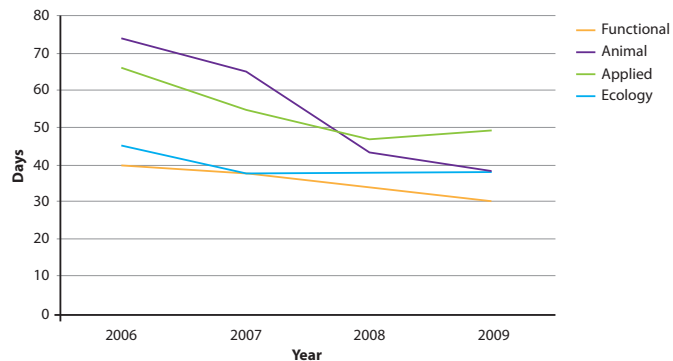
Trends in downloaded data



Trends in ISI rank



Trends in the number of days to first decision



Ecological Reviews

From Lindsay Haddon, Andrea Baier & Hefin Jones

- Two new volumes (*'Ecology of Industrial Pollution'* and *'Ecosystem Ecology'*) were published in March 2010, and are selling well. *'Speciation and Patterns of Diversity'* (2009) was reprinted within a year of publication in response to continuing demand. Volumes which are still selling, but at relatively low rates, when initial stock has been exhausted, are made available as digital reprints.
- A further 2010 volume, *'Urban Ecology'*, is due for publication in September. Chapters for *'The Integrative Role of Plant Secondary Metabolites'* (2010 BES symposium) are on schedule for 2011 publication as are two volumes introduced to the series by Cambridge University Press (*'Birds and Habitat'* and *'Trait-mediated Interactions'*).
- A proposal for *'Conflicts in Conservation'* is being evaluated by the editorial board following approval by Publications Committee. Concept proposals for *'Forests and Global Change'* (2011 BES Annual Symposium) and *'Ecology of Extreme Environments'* are expected shortly.
- The Series Editor is in discussion with potential editors for other topics identified as appropriate for the series.

- An Editorial Board meeting, with three members contributing via Skype, agreed ways of increasing its contribution to developing the series. Andrea Baier will be taking over Lindsay Haddon's role on the management team over the next twelve months; Hefin Jones role as Series Editor has been renewed for a further three year term, to the end of 2012.

Functional Ecology

Charles Fox on behalf of Ken Thompson, James Cresswell, Frank Messina & Liz Baker

- *Functional Ecology's* impact factor in the ISI tables for papers published in 2009 has shown an impressive increase to its highest ever at 4.546. Its place in the rankings of ecology journals rose by 6 places into the top 15 ecology journals listed in the rankings (ranked 15th out of 127 ecology journals indexed by ISI).
- The senior editorial team on the journal went through a number of changes: Duncan Irschick, University of Massachusetts Amherst replaced Chuck Fox as Executive Editor effective 1 July 2010. Chuck Fox moved to a senior editor role with responsibility for Special Features and Reviews. James Cresswell stood down as editor after 4 years on the senior editorial team.
- In late 2009 the journal published a special feature titled *Floral Scent in a Whole-Plant Context*, guest edited by Robert Raguso. In early 2010 we published another special feature, on *Adaptive Foragers and Community Ecology*, guest edited by Andrew Beckerman, Owen Petchey & Peter Morin.
- Three further special features have been commissioned for 2010/2011 and have papers currently under review: *Ecological Immunology*, *The Ecology of Antioxidants & Oxidative Stress in Animals* and *Evolutionary Ecology of Plant Defenses Against Arthropod Herbivores*.



Charles Fox



Liz Baker

- *Functional Ecology* launched two virtual issues in the first half of 2010. The first of these was at the start of the year to complement the special feature on Food Webs, and the second, on Plant Volatiles, will be published in time for the key plant conferences.
- Six new associate editors were recruited to the journal editorial board between 2009/2010 to replace existing members that stepped down at the end of their three year term of office. Quarterly newsletters continue to keep the editorial board informed of journal news.
- Submissions continued to rise during 2009. Following last year's drop in acceptance rate of un-invited papers (to below 20%) the journal increased its rejection without review rate to >40%.
- Early in 2010 *Functional Ecology* published its first Perspectives paper. Perspectives is a new section of the journal that will serve as an outlet for short articles presenting new ideas intended to stimulate scientific debate.

Journal of Animal Ecology

Graeme Hays on behalf of Mike Boots, Tim Coulson, Ken Norris, Ken Wilson & Jenny Guthrie

- We are very pleased to announce that *Journal of Animal Ecology's* Impact Factor is 3.714.
- Our Associate Editor board now stands at 56 members and, with an 8% increase to date in submissions, they are working hard to keep our turnaround times down.
- We have achieved our goal of reducing time to first decision: the average is now only 33 days.
- Our first 'How to ...' paper, published in Vol 79 Iss 1 and based on the animal model, has proved extremely successful with over 2,521 full article downloads (as at May 2010).
- Our popular 'In Focus' papers are now appearing in each issue and we have at least two Review papers published each year. A recent Review paper by Speakman and Krol, 'Maximal heat dissipation capacity and hyperthermia risk: neglected key factors in the ecology of endotherms' was graded '9.0 Exceptional' by Faculty of Biology 1000: <http://www3.interscience.wiley.com/journal/123394695/abstract>
- All our news, highlighted papers and updates on downloads and cites are to be found at www.journalofanimalecology.org



Graeme Hays



Jenny Guthrie

Journal of Applied Ecology

From Jane Memmott on behalf of E.J. Milner-Gulland, Phil Hulme, Marc Cadotte, Mark Whittingham & Gill Kerby

- An Editorial “Putting applied ecology into practice” was written by the Senior Editorial Team. The Editorial outlined the key attributes that form the basis of the papers published in the *Journal of Applied Ecology* and announced new developments for the journal.
- We published the first *Journal of Applied Ecology* podcasts. In the first, Editor Marc Cadotte interviews Paul Armsworth, co-author of the paper ‘The ecological research needs of business’ and in the second Marc interviews Rick Shine, co-author of the paper ‘Conditioned taste aversion enhances the survival of an endangered predator imperilled by a toxic invader’.
- On 30 August 2009, Simon Thirgood, who had worked as a Senior Editor for the Journal for 3 ½ years, was tragically killed in an accident while doing fieldwork in Ethiopia. A tribute to Simon and an obituary outlining his many achievements was published in the October issue of the Journal.
- Marc Cadotte and Mark Whittingham successfully made the transition from Associate to Senior Editor roles in January 2010. The Associate Editorial team was expanded and we would like to thank past and present AEs for their excellent service to the journal.



Jane Memmott



Gill Kerby

- We published three Virtual Issues in key thematic areas: ‘Applied Ecology in Asia, Key Perspectives in the Management of Biological Invasions’ and ‘Conserving European biodiversity: lessons from the science-policy interface’.
- We have had extensive coverage in the Media, with our papers on the use of acoustic techniques to monitor bird populations, the impacts of wind farms and strategies to combat the spread of invasive cane toads in Australia, proving particularly popular with the media.
- The Journal sponsored the first *Think Local Act Global* conference with the aim of increasing dialogue between academics and practitioners.

Journal of Ecology

From Mike Hutchings on behalf of Richard Bardgett, David Gibson & Andrea Baier

- A Virtual Issue was published, consisting of a selection of papers published in *Journal of Ecology* within the previous two years, either reporting research conducted within the Southern Hemisphere and/or by authors with affiliations within the Southern Hemisphere. Publication of this Virtual Issue coincided with the INTECOL Meeting held in Brisbane. It remains available for download on the Journal website (<http://www.journalofecology.org/view/0/virtualissuejul09.html>).
- A Special Feature entitled “Plant–soil Interactions and the Carbon Cycle”, edited by Richard Bardgett, Gerlinde De Deyn and Nicholas Ostle, was published in *Journal of Ecology*, Volume 97, Issue 5, pp. 838–912.
- A Special Feature entitled “Facilitation in Plant Communities”, edited by Rob Brooker and Ray Callaway, was published in *Journal of Ecology*, Volume 97, Issue 6, pp. 1117–1214.
- Amy Austin, Judith Bronstein, David Coomes, Ellen Damschen, Dali Guo, Thomas Kitzberger, Michelle Leishman, Rob Salguero-Gómez, Luis Santamaría Galdón, Ashley Sparrow and Peter Thrall were appointed to the board of Associate Editors and Mark Rees joined the Journal as Editor.

- A Special Feature entitled “Advances in Plant Demography using Matrix Models”, edited by Rob Salguero-Gómez and Hans de Kroon, was published in *Journal of Ecology*, Volume 98, Issue 2, pp. 250–355.



Mike Hutchings



Andrea Baier

- The 2009 Impact Factor announced for the *Journal of Ecology* was 4.69. This is the Journal's highest ever Impact Factor, and a 10% increase on the 2008 Impact Factor. The Journal is now 12th in the Ecology Journals listing on Web of Science (up 5 places) and remains 12th in the Plant Sciences journals listing.
- A Virtual Issue was published in memoriam Professor Robert Jefferies. Bob was an inspirational ecologist, a good friend to many of us, and especially to those in the younger generations, and a greatly valued and respected long-term colleague on our Editorial Board. The Virtual Issue consists of a tribute written by Tony Davy and a selection of Bob's most significant papers published in the Journal. It can be freely downloaded from the *Journal of Ecology* section of the BES website (http://www.britishecologicalsociety.org/journals_publications/journalofecology/virtualissue_jefferies.php)

Biological Flora of the British Isles

From Tony Davy



- Three accounts are being published this year. Creeping thistle (*Cirsium arvense*) is arguably the world's worst weed and the length of Gordon Tiley's comprehensive account (46 pages) reflects its importance. The account of the orchid Autumn Lady's-tresses (*Spiranthes spiralis*) includes attractive colour illustrations (see photo), first introduced into the Biological Flora last year. An account of the widespread Hedge Woundwort (*Stachys sylvatica*) completes the trio.

- We have adopted the new taxonomic treatment of the British Flora embodied in the 3rd edition of Clive Stace's *New Flora of the British Isles* (2010).
- The flow of offers to prepare new accounts has been good this year but the gestation times of completed articles are still variable, often extending over many years, or sometimes even decades. We still seek new authors with particular knowledge of species to undertake the many important accounts remaining to be produced. Please contact Professor Tony Davy (a.davy@uea.ac.uk).

- I am very grateful for the continuing valuable assistance of the Associate Editors (Chris Preston, Michael Proctor, David Streeeter and Michael Usher) and for specialist reviewing (Sir David Read).



Tony Davy

Methods in Ecology and Evolution

From Rob Freckleton and Graziella Iossa

- *Methods in Ecology and Evolution* published its first online article in November 2009 and its first issue in early 2010. All issues will be published ahead of schedule and there are already enough articles to fill issue 4.
- Several online initiatives were launched: the blog, the correspondence site, a YouTube channel and online extra features for authors and readers, such as podcasts and videos. Readers can follow our journal developments on social media such as Twitter and Facebook.
- The Journal held a *Launch Symposium* on April 22 at Charles Darwin House and the event was a success with the auditorium fully booked and six speakers out of the eight originally planned. The list of speakers had to be changed at the last minute due to the eruption of the Icelandic volcano.
- The editorial board is now comprised of 17 members, reflecting the areas where we wish to encourage submissions and those areas where submissions are already strong, such as in ecology. Ten members are based in the UK and Europe, five are based in the USA and Canada and two are based in Australia.

- Submissions have been above expectations, with over 150 manuscripts submitted since January 2010, approximately twice as many as expected. Submissions are still on an upward trend.



Rob Freckleton



Graziella Iossa

- The journal acceptance rate for articles is about 34% but will decline as submissions continue to increase and competition for space becomes more intense.
- Average time from submission to final decision is around 4 weeks, at 29 days.
- The journal has been promoted at the Canadian Society for Ecology and Evolution, Evolution, ESA and BES Annual Meetings.

From Alan Crowden

The *Bulletin* offers Society news and announcements laced, with articles and opinion from the wider community of ecologists. The editorial team of Alan Crowden, Alison Holt, Tom Webb and Peter Thomas are happy to receive ideas and suggestions from members for new features they would like to see included, and offers of contributions are always welcome.

The role of the *Bulletin* is to ensure that the membership is kept up to date with news of BES activities, which are many and varied, and we include regular news updates on BES activity from the Policy, Education and Grants Officers. The August issue always includes the Council and Auditors' Annual Report and Accounts.

In 2009 Tom and Alison produced an excellent feature on **Marine Ecology** for the March issue, covering exploration of the marine environment, human impacts and marine ecology and society. Tom and Alison also organise the popular **Field Notes**, in which leading ecologists describe a field site that has inspired their interest in ecology. Callum Roberts chose Palau, Mike Chadwick Cwm Idwal and Pen Y Pass, Dave Rafaelli the Ythan Estuary. Chris Thomas chose Home, or more specifically the wildlife garden he has created in two acres of former agricultural fields.

The Managing Editors of the journals continue to supply news of the crucial Society journals, and the *Bulletin* included full coverage to the build up to the launch of the new online journal *Methods in Ecology and Evolution*. In an acknowledgement of the importance of this activity to the BES we launched a new series on **Methods in Ecology**.

One of the most popular papers of the year was John Wiens' essay on the importance of ecological monitoring; we had at least 6 requests for permission to circulate copies of the article to other groups of ecologists. The Book Review section continues to scan a wide range of titles and we have to thank Peter Thomas, David Walton, Peter Moore, Janet Sprent, Mark Young, Owen Jones, Des Thompson, Phil Stephens, Antoinette Mannion, David Murrell, John Hopkins, Ian Lancaster, Justin Travis, Sarah Taylor, John Packham, Jon Hoole and David Bignell, who between them reviewed 78 books during the course of the year.



Alan Crowden

Special Interest Groups

Agricultural Ecology Group

From Barbara Smith

- The Agricultural Ecology Group began 2010 with a meeting aimed at postgraduate students, the theme of which was 'From the thesis to the field'. Students heard from Simon Butler (Reading University), Tony Morris (RSPB), Lisa Norton (CEH), Lydia Smith (NIAB) and Chris Stoate (GWCT). A discussion was led by Richard Ratcliffe of the NFU.
- In collaboration with the Association of Applied Biologists the AEG organised a well received three day conference 'Agri-environment schemes – what have we achieved and where do we go from here?'. The audience of over 100 people was drawn from the scientific, policy and farming sectors. Delegates heard from national and international speakers and took advantage of a visit to GWCT Loddington Farm to see agri-environment options in the field.
- A symposium is arranged (July) to discuss 'Showcasing and Testing Resources for Farmers, Agronomists and Ecologists to Increase Biodiversity on Farm', to be held at NIAB, including a visit to the newly established Innovation Farm.

- A meeting is arranged (October) to discuss 'Managing risk in agro-ecosystems' at Rothamsted Research.
- This year the AEG meeting at the Annual Meeting will take the form of a dinner. We tried this two years ago and it was a great success, giving members an opportunity to get to know each other informally.



Barbara Smith

Special Interest Groups

Aquatic Ecology Group

From Ronnie Edmonds-Brown

The group membership continues to remain steady with between 478-490 members. The membership spans a range of nationalities with academics, students, consultancy, and organisations such as the Environment Agency, CEH and Natural England. Our members primarily communicate through JISCMail and the BES web site. JISCMail is used to advertise studentships and posts and is an arena for discussions and for advice.

The 2009 Annual Meeting of the BES ran two aquatic sessions and two thematic topics had aquatic input. The group also sponsored a speaker from CSIRO on marine ecosystem management who attended both the marine conference and the BES. As usual, our AGM was held within the BES annual meeting. This meeting offers an opportunity for members to network and discuss issues, put forward suggestions for meetings, workshops etc.

Through JISCMail we sought a new secretary with the option of elections if we had several offers. As is usual for the Aquatic Ecology Group, this was a very civilised approach – not to say laid back! The new secretary will be Dr Anne Robertson who will take on the role in the autumn of 2010. Anne is Reader

in Ecology at Roehampton University and specialises in micro crustacea.

Meetings that have occurred through the year include the very successful meeting on Drawdown Zones which was held at the Linnaean Society in June, and support was again given to the River Restoration Centre annual conference in April.

Meetings scheduled for the near future include the RGS & BSG session on Understanding and Managing Urban Rivers on the 2nd September 2010. This is an interdisciplinary session on Understanding and Managing Urban Rivers will take place as part of the joint Royal Geographical Society Annual Conference 2010, and the British Society for Geomorphology 50th anniversary 'Grand Challenges' conference.

There are a number of meetings to look forward to which include the International Temperate Reef Symposium to be held in Plymouth in 2011 and an international meeting on ecohydrology.

This is my final year as secretary and I leave the group in Anne Robertson's very capable hands.



Ronni Edmonds-Brown

Special Interest Groups

Conservation Ecology Group

From Mick Green

The Conservation Ecology Group has been quiet during 2010, Several meetings have been mooted but lack of support meant none have materialised. During the remainder of 2010 it is planned to consult the groups membership and the wider BES membership on the future of the group and a re-launch is planned for 2011.



Mick Green

Special Interest Groups

Computational Ecology

From David Murrell

The group is still growing, and finding its feet, but in the year 2009-2010 we have seen continued interest in the development and expansion of computational ecology. The overall aim of the group is to promote the understanding and use of cutting edge computational tools that should allow for greater analytical insight into populations, communities and ecosystems. We are in exciting times and the rapid increase in computer power now means we are able to fit sophisticated mechanistic models to rich but often heterogeneous datasets collected from the field, and in the laboratory. In combination with new mathematical models that may generate new hypotheses to test, and new patterns to measure, it is hoped these methods should lead to a much better level of prediction and understanding of natural populations and communities.

The showcase activity of the year is the thematic session on Advances in Ecological Modelling at the 2010 BES Annual Meeting in Leeds. This session covers some of the latest techniques in modelling ecological data, starting from population and community dynamics, all the way up to evolutionary ecology and how to combine population dynamics with quantitative genetics. Keynote speakers

include Aaron King (University of Michigan); Rob Freckleton (University of Sheffield); and Otso Ovaskainen (University of Helsinki). The aim is to present new ways of analysing ecological data, and to highlight the strengths, weaknesses and assumptions of the computational techniques. In doing so it is hoped the session acts as a portal for potential users (other ecologists!) to the computational methods being developed, and that access to this new toolset will make the most of the data currently collected.



David Murrell

There are several other meetings and workshops in the pipeline for late 2010 and 2011 which will combine the group with other specialist interest groups within the BES and also with other professional bodies. Combined with this the organising team behind the specialist interest group is likely to be expanded in the near future and this should lead to an even greater number of events being organised.

Special Interest Groups

Ecological Genetics Group

From Paul Ashton

EGG considers itself to be an important part of the BES. It acts as the interface between utilisation of molecular markers and ecological questions with a genetic basis.

EGG continued its tradition of successful annual conferences, hosting its 54th such event at Stirling University in April of this year which was expertly organised by Dr. Cecile Bacles. The conference featured an eclectic mix of speakers and subjects, with 65 delegates from seven countries and speakers ranging from postgraduates through to senior academics. Unusually there were two guest speakers, rather than the usual one. Dr. Bill Amos (Cambridge) opened the conference with his excellent talk entitled 'From molecules to organisms: using the life history of one to infer aspects of the other' while Prof. Richard Abbott (St. Andrews) closed the conference by outlining how his extensive work on introgression on *Senecio* (groundsels and ragworts) was placed into the broader context of current work in the area. These two speakers also contributed to the overall success of the meeting with their general involvement throughout.

Additionally delegates were treated to a variety of talks covering subjects such as genetic structure, glacial history, pollination

and gene flow, mating systems and inbreeding effects. The organisms under study were similarly wide ranging and included vascular plants, seaweeds, fungi and animals. The poster session was equally diverse and of comparably high quality. Prizes for best student talks were given to Aline Finger (ETH Zurich; Conservation genetics of the jellyfish tree, a Seychelles flagship species) and Penelope Whitehorn (Stirling; Does inbreeding in bumblebees compromise immunity?) with best poster prizes going to Sabrina Reignoux (Edinburgh; Two new species of fungal endophyte colonies in *Pinus sylvestris* needles in Scotland) and Karin Kalijund (Estonian University of Life Sciences; Genetic diversity in fragmented semi-natural populations of *Medicago sativa* ssp. *falcata*). Prizes for these awards were sponsored by Oxford University Press and Roberts and Co Publishers.

The group membership continues to remain steady with almost 200 subscribers to the JISMAIL service. The membership spans a range of nationalities with academics across the range of professional experience. It also includes members in statutory organisations. Communication is through JISMAIL and the BES web site. Plans for next year involve bringing the annual conference to London next Easter and to gently increase the presence at the BES annual conference.



Paul Ashton

Special Interest Groups

Forest Ecology Group

From Adrian Newton

The group has held two meetings in the last 12 months.

- **Monitoring long-term changes in British woodlands**, held at Fitzwilliam College, Cambridge, October 2009. The meeting, organised by David Coomes, was well-attended (about 40 people); there were a good range of presentations, including from Eire and Belgium, and some lively discussion. Our thanks to David and his colleagues for an interesting day.

A theme running through the day was still the difficulties of maintaining long-term studies. Frequently studies depend on the interests of individuals for their inception and maintenance; money to set up plots, exclosures etc is frequently easier to obtain than the much smaller sums subsequently needed to maintain the studies during the difficult 'medium term' (5-10yrs) when the initial project funding has ended and the changes occurring are often not sufficiently interesting to justify a new grant proposal. Policy drivers, the requirements under various conventions to 'monitor condition' may be helpful, but in most instances the link between long-term research findings and policy tends to be serendipitous rather than planned.

Improving the survival and accessibility of data was another theme that could have come straight from George Peterken's presentation at a similar BES meeting ten years ago. We benefit enormously from that studies made in the sixties and seventies, and even more rarely earlier (as with Professor R Good's Dorset data, described by Sally Keith). The current generation of researchers need to make sure our data are properly curated and disseminated so they can be similarly valued in ten, twenty or even seventy years time. The need for an Ecological Archive remains critical.



Adrian Newton

- **BES Forest Ecology Group meeting**, Wytham, in April to mark the publication of *Wytham Woods: Oxford's ecological laboratory*. A one day meeting was held to mark the publication of a book profiling many decades of research into Wytham wood. In the morning, a series of short talks were given on the pioneers of ecological research at Wytham Woods, and in the afternoon there was an opportunity to visit the woodland to see various research projects in progress. A full account of the meeting is in preparation.

Special Interest Groups

Invasive Species Group

From Rob Francis

We continue to recruit members via the JISCmail system, with a broad international coverage; membership numbers are unclear and are probably between 70-100 at the current time. Membership seems to be mainly from practitioner organisations such as the Wildlife Trusts, though academics are also well represented. At the 2009 Annual Meeting, the IS AGM was run by Nicola Randall and Helen Bayliss. The turnout was modest due to clashes with other events, but suggestions were made for future conference themes and sessions.

The group had scheduled our one-day annual conference on Emerging Issues in Invasive Species Science and Management for September 2010, but this has had to be rearranged due to a clash with the Neobiota conference in Copenhagen. Plans are for the group to run a larger meeting in April 2011, and for our 'Science and Management' series to become two-day biennial events. The group secretary is also a member of the London Invasive Species Initiative and there are plans for LISI and the IS group to run a London-based conference in due course.

There will be an RGS & BSG session on Understanding and Managing Urban Rivers on the 2nd September 2010, on urban invasive species and which the group is co-sponsoring, along with the RGS Biogeography Research Group. This interdisciplinary session on Understanding and Managing Urban Rivers will take place as part of the joint Royal Geographical Society Annual Conference 2010, and the British Society for Geomorphology 50th anniversary 'Grand Challenges' conference.



Rob Francis

Finally, the 2009 conference on Invasive Species Ecology and Management: Linking Research and Practice identified the need for literature that advises on the ecology and management of key invasive species, and which would be best in book form so that it would be more easily accessible to practitioners than academic papers. The IS secretary has been active in following this up, and as a result is currently editing A Handbook of Global Freshwater Invasive Species, which includes over 30 chapters on freshwater invasives by eminent contributors from around the world. The book will be published by Earthscan in 2011.

Special Interest Groups

Plant Environmental Physiology Group

From Matt Davey

The Plant Environmental Physiology Group (PEPG) is one of the special interest groups (SIGs) within the British Ecological Society and the Society for Experimental Biology.

- Meeting report: In April we had our first joint BES/SEB SIG meeting at the new Darwin House conference facility. This meeting was very successful, with over 20 PEP members attending the two day meeting. The aim of the meeting was to assess the current state of plant environmental physiology in research and education across the UK. The idea was that we use this meeting to revitalise PEPG activities and integrate them across BES and SEB meetings for the future. It allowed us to undertake a self evaluation of strengths, weaknesses and opportunities, at a time when we need to increase public recognition of the role of plants in bioenergy (food vs fuel), agricultural production and responses to climate change.
- We will also have an informal PEP group meeting at the BES annual meeting, so please come along (refreshments provided!), we especially welcome you if you are new to plant physiology (degree, PhD level) and would like to talk about your research/methods.

- The PEP website and email discussion list is still popular (with nearly 300 members worldwide this ensures a response to your emails whatever time of day or night you send it!).



Matt Davey

Messages posted to the list are automatically forwarded to all members. Messages may include research questions/methodology and information, discussion and requests, news of future meetings and PhD/job advertisements. <http://plantenvironmentalphysiology.group.shef.ac.uk> Dr Colin Osborne at the University of Sheffield. The main secretary is Prof. Howard Griffiths (hg230@cam.ac.uk), with Prof. Gail Taylor as group secretary within the SEB and Dr Matt Davey (mpd39@cam.ac.uk) as group secretary within the BES.

- Please promote the PEP group with academic colleagues, postdocs and PhD/MSc students etc whether starting this year, or by now well established. Encourage them to visit the website and sign up to the jiscmail email forum at: (<http://plantenvironmentalphysiology.group.shef.ac.uk>) or directly at: (<https://www.jiscmail.ac.uk/cgi-bin/webadmin?A0=env-physiol>)

Special Interest Groups

Tropical Ecology Group

From Simon Queenborough

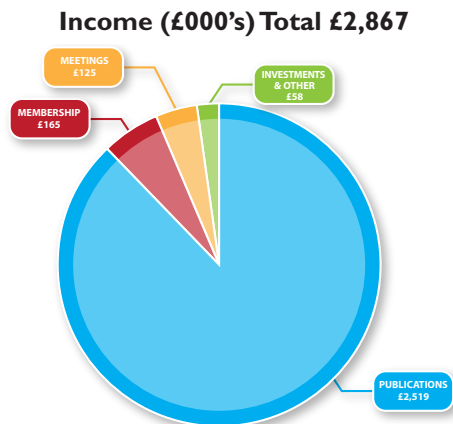
- Will Gosling successfully handed over the Secretaryship to Simon Queenborough at the 2009 BES AGM. We thank Will for his commitment to TEG and all his hard work.
- A fantastic 4th Early Career Researcher Meeting at Nottingham University
- 7-9 April 2010. Organised by Markus Eichhorn and Richard Field, with plenary talks by Anne Chao (National Tsing Hau University, Taiwan) on estimating species diversity, Owen Lewis (University of Oxford) on food webs, and Francis Gilbert (University of Nottingham) on linking academia and conservation. Delegates from 24 institutions and over 12 countries presented 17 oral presentations and eight posters. Final Congolese dance fiesta!
- Two post-conference workshops on estimating species diversity (Anne Chao) and spatial analysis in macroecology (Richard Field).
- E-bulletins: Our monthly newsletter is sent to >180 members, and is archived on the BES website.

- BES Annual Meeting in Leeds 2010: Thematic Topic 4: Understanding the impact of disturbance on plant communities. Organised by Tim Baker, Katy Roucoux and Geertje van der Heijden. Plus group meeting.
- The 5th Early Career Researcher Meeting: University of Newcastle, organised by Huw Lloyd (March/April 2011).



Simon Queenborough

Summary of Financial Information



In 2009 the BES achieved an operation surplus of £584,467 on unrestricted funds. Council set the 2009 budget to make a modest surplus that could be used to accumulate funding for the centenary celebrations in 2013. Several factors, including a higher than expected publishing income due to foreign exchange rates contributed to the operating surplus in 2009.

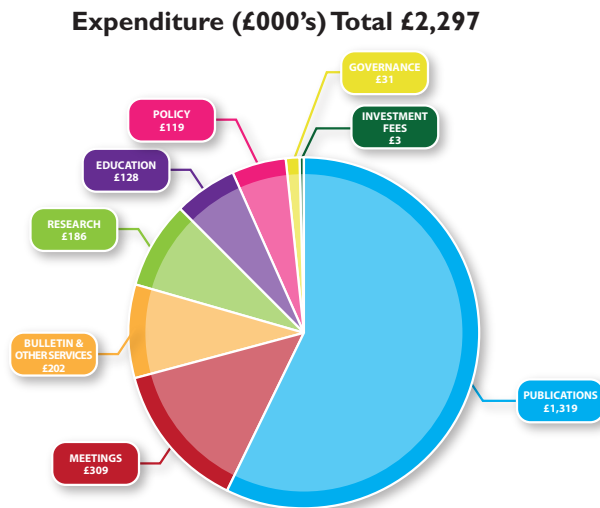
This information is taken from the audited accounts for 2009 which were approved on 15 June 2010. This summary may not contain sufficient information to allow a full understanding of the financial affairs of the BES. Full accounts are published in the August 2010 *Bulletin*.



Calvin Dytham
Honorary Treasurer



Vivien Cheung
Finance Officer



People

Officers

President	Charles Godfray
Past President	Malcolm Press
Vice President	Mike Begon Kate Lessells
Hon. Secretary	Greg Masters
Hon. Treasurer	Calvin Dytham

Committee Chairs

Finance Board	Charles Godfray
Management Board	Charles Godfray
Education, Training & Careers Committee	Libby John
Grants Committee	Mike Begon
Meetings Committee	Hefin Jones
Membership Committee	Kate Lessells
Personnel Committee	Greg Masters
Public and Policy Committee	Peter Carey
Publications Committee	Sue Hartley

Trustees

Jeff Bale	Charles Godfray	Dan Osborn
Lesley Batty	Rosie Hails	Margaret Palmer
Tim Blackburn	Sue Hartley	Malcolm Press
Mike Begon	David Hodgson	Tim Rotheray
Peter Carey	Hefin Jones	David Thompson
David Coomes	Libby John	Adam Vanbergen
Calvin Dytham	Kate Lessells	
Thomas Ezard	Greg Masters	

People

Members of the Executive

Hazel Norman	Executive Director
Elizabeth Baker	Managing Editor, Functional Ecology
Andrea Baier	Managing Editor, Journal of Ecology
Bill Bewes	Membership Officer
Dominic Burton	Grants Officer
Vivien Cheung	Finance Officer
Karen Devine	Education Officer
Richard English	Communications Officer
Jenny Guthrie	Managing Editor, Journal of Animal Ecology
Lindsay Haddon	Publications Manager
Graziella Iossa	Journal Coordinator, Methods in Ecology and Evolution
Gill Kerby	Managing Editor, Journal of Applied Ecology
Ceri Margerison	Policy Officer
Heather Mewton	Clerical Officer
Nickie Roake	Journal Administrator

Executive Editors

Alan Crowden	Bulletin
Rob Freckleton	Methods in Ecology and Evolution
Graeme Hays	Journal of Animal Ecology
Mike Hutchings	Journal of Ecology
Duncan Irschick	Functional Ecology
Jane Memmott	Journal of Applied Ecology