

English Policy Group Brief

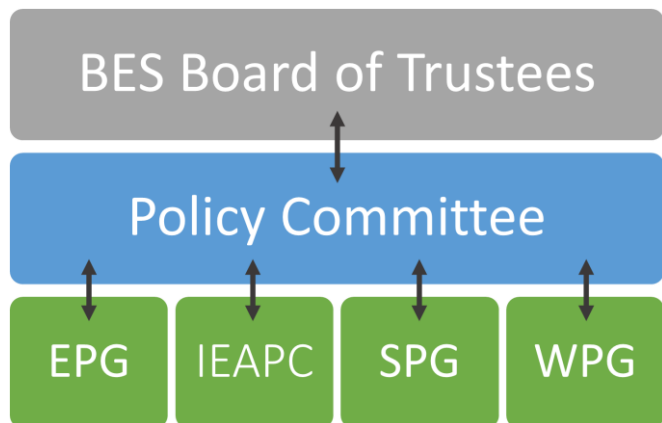
Remit

The BES English Policy Group (EPG) will link ecologists and policymakers and promote policymaking informed by ecological science. It will present the scientific evidence rather than campaigning on particular issues. The EPG policy work will align with the BES mission to advance ecology and make it count. This will include operating within a wider proactive model for BES policy work, meaning that the EPG will not only react to policy opportunities (such as consultations) but will also focus on identifying key policy opportunities to increase the BES policy impact.

The EPG will organise events (such as ‘Pie and a Pint’ events and policy training workshops) focussed on policy priorities and processes in England, prepare briefings to members about the latest English policy news and respond to particularly important consultations and inquiries. The activities that will be carried out will be agreed with the EPG, following the development of the EPG Strategy document. We would expect that once established the group will meet no more than four times per year and always online.

Links to BES Policy Committee

The remit of the EPG will be to develop and oversee the delivery of the Society’s policy work in England in conjunction with the BES Policy Committee. The BES Policy Officer based in London will manage the EPG. The EPG will work alongside the Scottish and Welsh policy groups, and the Irish Ecological Association policy committee, to deliver unique national policy work and contribute to the wider UK policy opportunities. All policy groups report into the BES policy committee.



The EPG will comprise a Chair, Vice-Chair, an early career representative and up to 7 other members. One member of the EPG will sit on BES Policy Committee and provide a link between BES Policy Committee and EPG.

Recruitment

The Policy Team is seeking to recruit a responsive and enthusiastic EPG Chair who is experienced but, most crucially, has time and energy to commit to the group. Based on this, the Chair potentially should be at a mid-career stage, although other career stages will be considered.

The Chair and the members of the EPG will be appointed through an open, transparent and fair recruitment process involving promoting the opportunity as widely as possible through BES communication channels, as well as considering appropriate nominations and proactively contacting individuals to invite them to apply to the role. Group members will be selected to achieve a breadth of science-policy skills and knowledge across the group. The BES Policy Team will aim to ensure diversity, as regards underrepresented groups, and establish a group across a breadth of career stages.